

สปริงสีฟ้า แรกกดเบา
LIGHT LOAD CODE DL

วงนอก	วงใน	L																										
		D	d	10	15	20	25	30	35	40	45	50	55	60	65	70	75	80	90	100	125	150	175	200	250	300		
8	4																											
10	5																											
12	6																											
14	7																											
16	8																											
18	9																											
20	11																											
22	11																											
25	12.5																											
27	13.5																											
30	15																											
35	17.5																											
40	20																											
50	25																											
60	30																											



Order : CODE D x L = Pcs.
DL 25 x 60 = 20

สปริงสีแดง แรกกดปานกลาง
MEDIUM LOAD CODE DM

วงนอก	วงใน	L																										
		D	d	10	15	20	25	30	35	40	45	50	55	60	65	70	75	80	90	100	125	150	175	200	250	300		
8	4																											
10	5																											
12	6																											
14	7																											
16	8																											
18	9																											
20	11																											
22	11																											
25	13.5																											
27	13.5																											
30	15																											
35	17.5																											
40	20																											
50	25																											
60	30																											



Order : CODE D x L = Pcs.
DM 25 x 60 = 20

E

Die Springs Screws



สปริงสี่ขีว แรกดหนัก HEAVY LOAD CODE DH

วงนอก	วงใน	L																										
		D	d	10	15	20	25	30	35	40	45	50	55	60	65	70	75	80	90	100	125	150	175	200	250	300		
8	4																											
10	5																											
12	6																											
14	7																											
16	8																											
18	9																											
20	10																											
22	11																											
25	12.5																											
27	13.5																											
30	15																											
35	17.5																											
40	20																											
50	25																											
60	30																											



Order : CODE D x L = Pcs.
DH 25 x 60 = 20

สปริงสี่ขีว แรกดหนักพิเศษ SUPER LOAD CODE DB

วงนอก	วงใน	L																										
		D	d	10	15	20	25	30	35	40	45	50	55	60	65	70	75	80	90	100	125	150	175	200	250	300		
8	4																											
10	5																											
12	6																											
14	7																											
16	8																											
18	9																											
20	10																											
22	11																											
25	12.5																											
27	13.5																											
30	15																											
35	17.5																											
40	20																											
50	25																											
60	30																											



Order : CODE D x L = Pcs.
DB 25 x 60 = 20

สปริงสำหรับรีটারนพิน

SPRING FOR RETURN PIN



CODE DY (สีม่วง)

CODE DR (สีเงิน)

ขนาด	รูใน	ยาว	ราคา		ขนาด	รูใน	ยาว	ราคา		ขนาด	รูใน	ยาว	ราคา	
			DY	DR				DY	DR				DY	DR
14.5	9	20			21	13	30			32 (31)	21	40		
	9	25				13	35				21	50		
	9	30				13	40				21	60		
	9	35				13	45				21	70		
	9	40				13	50				21	80		
	9	45				13	55				21	90		
	9	50				13	60				21	100		
	9	55				13	65				21	110		
	9	60				13	70				21	125		
	9	65				13	75				21	150		
	9	70				13	80				26	40		
	9	75				13	90				26	50		
	9	80				13	100				26	60		
	9	90				13	125				26	70		
17	11	25			26	16.5	30			46	26	80		
	11	30				16.5	35				26	90		
	11	35				16.5	40				26	100		
	11	40				16.5	45				26	110		
	11	45				16.5	50				26	125		
	11	50				16.5	55				26	150		
	11	55				16.5	60				26	175		
	11	60				16.5	65				26	200		
	11	65				16.5	70				32	70		
	11	70				16.5	75				32	80		
	11	75				16.5	80				32	90		
	11	80				16.5	90				32	100		
	11	90				16.5	100				32	110		
	11	100				16.5	110				32	125		
11	125			16.5	125			32	150					
				16.5	150			32	175					
								32	200					
								32	250					

สปริงสีฟ้ารุ่นยาว 12 นิ้ว (300 mm.)

ขนาด	วงใน	ราคา
3/8 (9.5 mm)	5 mm	
1/2 (12.5 mm)	7 mm	
5/8 (15.5 mm)	8.5 mm	
3/4 (19 mm)	9.5 mm	
1" (25 mm)	13 mm	
1 1/4 (32 mm)	16.5 mm	
1 1/2 (38 mm)	19.5 mm	
2" (50 mm)	26 mm	

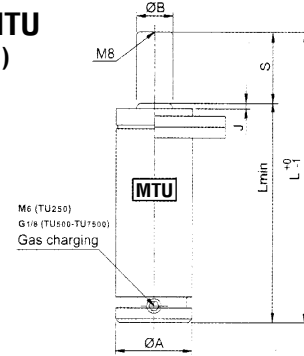
สปริงสีเหลืองรุ่นยาว 12 นิ้ว (300 mm.)

ขนาด	วงใน	ราคา
10 mm	5 mm	
12 mm	6 mm	
16 mm	8 mm	
20 mm	11 mm	
25 mm	14 mm	
30 mm	16 mm	
35 mm	19 mm	
40 mm	22 mm	

MITEBO® เก๊สสปริงรุ่นมาตรฐาน



Gas Spring MTU
(250-10000 kg)



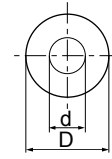
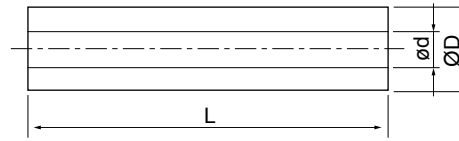
Code	S Stroke (mm)	Spring force, Newton 150 bar/+20°C		Ø A ± 0.1	Ø B	Ø J	L ± 0.25	L min	ราคา
		Init.	Max.						
MTU250-013	12.7	2650	3500	38	15	2	75.4	62.7	
MTU250-016	16		3500				82	66	
MTU250-038	38.1		3500				126.2	88.1	
MTU250-050	50		3500				150	100	
MTU250-080	80		3500				210	130	
MTU250-125	125		3500				300	175	
MTU500-125	125	4700	6700	45.2	20	2	335	210	
MTU750-013	12.7	7400	12000	50.2	25	3	120.4	107.7	
MTU750-025	25		12000				145	120	
MTU750-038	38.1		12000				171.2	133.1	
MTU750-050	50		12000				195	145	
MTU750-064	63.5		12000				222	158.5	
MTU750-080	80		12000				255	175	
MTU750-100	100		12000				295	195	
MTU750-125	125		12100				345	220	
MTU1500-050	50	15000	23000	75.2	36	3	210	160	
MTU1500-064	63.5		23000				237	173.5	
MTU1500-080	80		23000				270	190	
MTU1500-100	100		23000				310	210	
MTU1500-125	125		23000				360	235	
MTU3000-025	25		30000				42000	95.2	50
MTU3000-038	38.1	43000		196.2	158.1				
MTU3000-050	50	44000		220	170				
MTU3000-064	63.5	45000		247	183.5				
MTU3000-080	80	46000		280	200				
MTU3000-100	100	47000		320	220				
MTU5000-025	25	50000	71000	120.2	65	3	190	165	
MTU5000-038	38.1		75000				216.2	178.1	
MTU5000-050	50		77000				240	190	
MTU5000-064	63.5		80000				267	203.5	
MTU5000-080	80		81000				300	220	
MTU5000-100	100		82000				340	240	
MTU5000-160	160		83000				460	300	
MTU7500-038	38.1		75000				110000	150.2	80
MTU7500-064	63.5	115000		282	218.5				
MTU7500-100	100	119000		355	255				
MTU7500-125	125	121000		405	280				

ST ยูเรเทนสำหรับงานทั่วไป

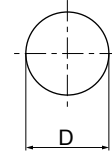
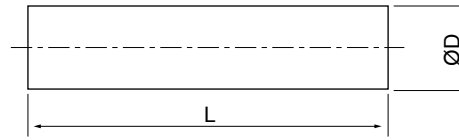
URETHENES STANDARD TYPE



UTH
ชนิดมีรู



UTS
ชนิดตัน



สีธรรมชาติ H SHORE 90°

CODE	D	d	L	ราคา	CODE	D	L	ราคา
UTH	15	6.5	300		UTS	10	300	
	20	8.5				12		
	25	11				15		
	30	13				20		
	35	13				25		
	40	15				30		
	50	16				35		
	60	18				40		
	80	20				50		
	100	30				60		
UTH	20	8.5	500		UTS	80	500	
	25	11				100		
	30	14				20		
	35	14				25		
	40	14				30		
	50	14				35		
	60	14				40		
	80	22				50		
	100	22				60		
					100			

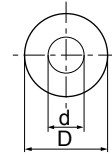
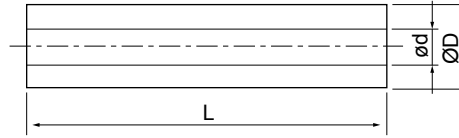
Order : CODE D x L = Pcs.
UTS 60 x 300 = 10 Pcs.

ST ยูเรเทนสำหรับงานหนัก

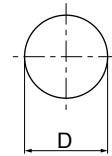
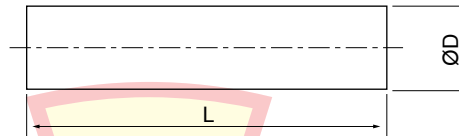
URETHENES HEAVY LOAD TYPE



HUTH
ชนิดมีรู



HUTS
ชนิดตัน



สีดำ H SHORE 90°

CODE	D	d	L	ราคา	CODE	D	L	ราคา
HUTH	10	-	-		HUTS	10	300	
	15	7				15		
	20	8.5	300			20		
	25	11				25		
	30	14				30		
	40	14				40	500	
	50	14	500			50		
	60	14				60		
	80	22				80		
	100	22				100		

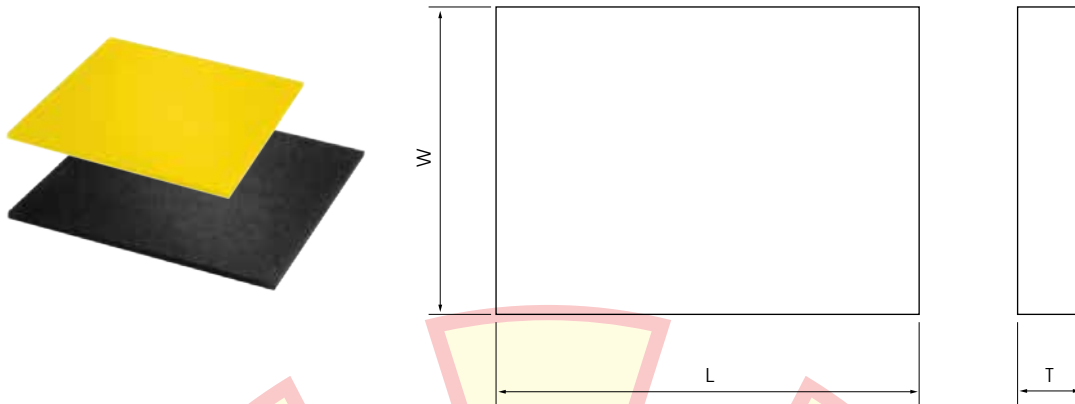
Order : CODE D x L = Pcs.

HUTH 40 x 500 = 10

ST ยูรีเทนชนิดแผ่น

POLY-URETHANE SHEETS

UTE สำหรับงานทั่วไป (สีธรรมชาติ)
HUTE สำหรับงานหนัก (สีดำ)



H SHORE A 90°

300(W) x 300(L)		
T	ราคา	
	UTE	HUTE
5		
10		
15		
20		
25		
30		
35		
40		
50		
60		
70		
80		
100		

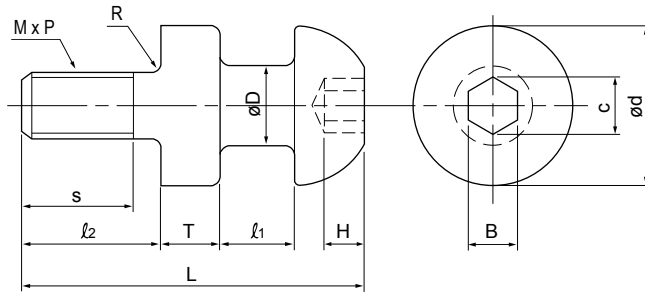
300(W) x 1000(L)		
T	ราคา	
	UTE	HUTE
1		
2		
3		
4		
5		
6		

500(W) x 500(L)		
T	ราคา	
	UTE	HUTE
8		
10		
15		
20		
25		
30		
40		
50		

Order : CODE T x W x L = Pcs.
UTE 5 x 300 x 1000 = 1

ST ทุหัวแม่พิมพ์แบบเกลียว

HOOKS BOLT TYPE

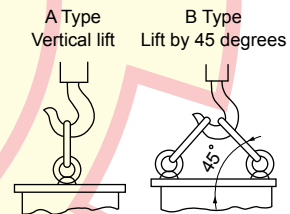
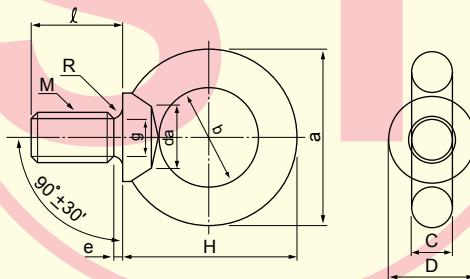


M S45C
ผิวรมดำ

CODE	No.	M x P	D	d	l1	l2	S	T	L	R	H	B	C	รับน้ำหนักได้ Kgs/Pcs	ราคา
HBT	10	10 x 1.5	13	32	10	20	16	8	46	1.5	5	8	9.2	250	
	12	12 x 1.75	16	36	13	24	20	10	57	1.5	6	10	11.7	360	
	16	16 x 2.0	20	40	18	30	25	13	75	2	9	14	16.3	680	
	20	20 x 2.5	25	48	20	37	32	16	90	2	12	17	19.8	1,060	
	24	24 x 3.0	32	58	25	47	40	20	111	2.5	13	19	22.1	1,530	
	30	30 x 3.5	36	68	30	56	48	22	131	3	16	22	25.6	2,430	
	36	36 x 4.0	40	78	30	68	58	25	148	3	18	27	31.4	3,550	

ST ทุหัวแม่พิมพ์แบบห่วง

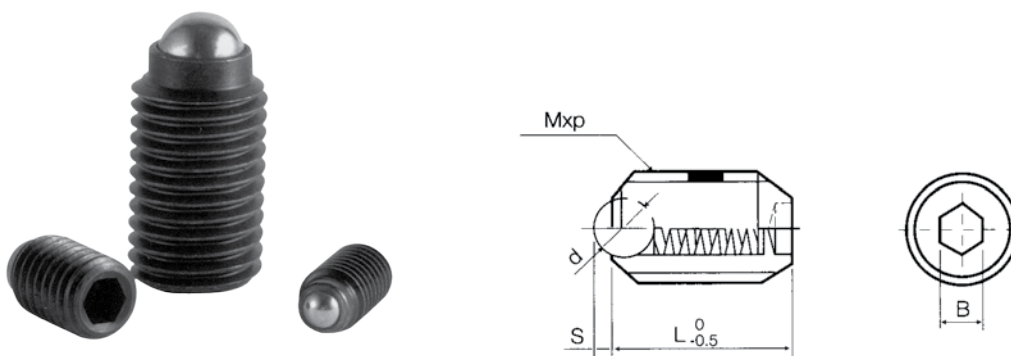
LIFTING EYE BOLTS



M SS400
JIS1168

CODE	M	M x P	a	b	C	D	H	l	e	g	R	da	Maximum permissible load N {kgf}		ราคา
													A : Vertical 1pc.	B : 45° 2 Pcs.	
HL	8	8 x 1.25	32.6	20	6.3	16	33.3	15	3	6	1.0	9.2	80	80	
	10	10 x 1.5	41	25	8	20	41.5	18	4	7.7	1.2	11.2	150	150	
	12	12 x 1.75	50	30	10	25	51	22	5	9.4	1.4	14.2	220	220	
	16	16 x 2.0	60	35	12.5	30	60	27	5	13	1.6	18.2	450	450	
	20	20 x 2.5	72	40	16	35	71	30	6	16.4	2	22.4	630	630	
	24	24 x 3.0	90	50	20	45	90	38	8	19.6	2.5	26.4	950	950	
	30	30 x 3.5	110	60	25	60	110	45	8	25	3	33.4	1500	1500	
	36	36 x 4.0	133	70	31.5	70	131.5	55	10	30.3	3	39.4	2300	2300	
42	42 x 4.5	151	80	35.5	80	150.5	65	12	35.6	3.5	45.6	3400	3400		

ST ลูกตันสปริง BALL PLUNGER

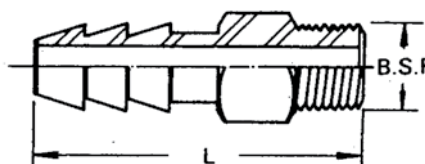
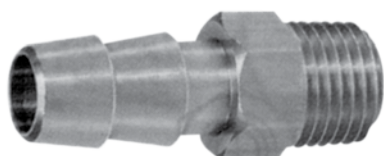


CODE : BPJ

CODE : BPS (แบบสแตนเลส)

ขนาด	M x P	d	S	B	L	min md x load		ราคา	
								BPJ	BPS
4 mm	4 x 0.7	2.5	1.0	2	9	0.3	1.0		
5 mm	5 x 0.8	3.0	1.0	2.5	12	0.5	1.5		
6 mm	6 x 1.0	3.5	1.2	3	14	0.7	2.0		
8 mm	8 x 1.25	5.0	1.8	4	16	0.9	2.5		
10 mm	10 x 1.5	6.0	2.0	5	19	1.0	3.0		
12 mm	12 x 1.75	8.0	3.0	6	22	1.6	5.0		
16 mm	16 x 2.0	9.5	3.0	8	25	2.0	8.0		

ก๊อมน้ำเหล็กและทองเหลือง




E

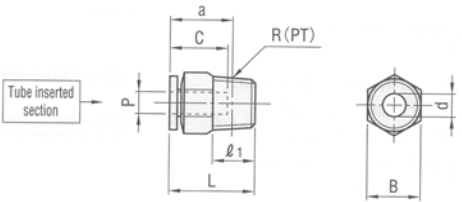
Die Springs Screws



ข้อต่อน้ำทองเหลือง




M-PC (Straight Joint Plug - Spanner type)



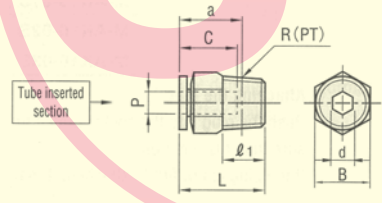
M Body : Brass (C3604) + Nickel plating
 Release ring : Polyacetal resin (POM)
 Thread : Brass (C3604) + nickel plating
 Thread JIS B 0203 tapered thread for tubing R (PT)
 *Thread part is applied with sealant.

- Use in normal pressure 300kPa (3kgf/cm²) or lower
- Keep water temperature under 60°C
- Set the surge pressure (the pressure that acts instantaneously due to an impact flow) so that it does not exceed the maximum working pressure (300 kPa)

Matching tubes Outer x Inner dia.	Tube Inserting hole		d	L	a	Allen side B	ℓ ₁	R (PT)	Part Number		U/Price 1-19
	Hole dia. P	Depth C							Type	No.	
4 x 2.5	4	15	3	21.0	17.0	10	8	1/8	M - PC	4 - 01	
					15.0	14	11	1/4		4 - 02	
6 x 4	6	17	4.6	22.6	18.6	12	8	1/8		6 - 01	
				24.6	18.5	14	11	1/4		6 - 02	
				23.6	17.2	17	12	3/8		6 - 03	
8 x 6	8	18.5	6	27.9	23.9	14	8	1/8		8 - 01	
				26.6	20.6		11	1/4		8 - 02	
				23.9	17.6	12	3/8	8 - 03			
10 x 7.5	10	21	6	30.3	26.3	17	8	1/8		10 - 01	
				29.8	23.8		11	1/4		10 - 02	
				29.3	23	12	3/8	10 - 03			
12 x 9	12	23.5	8.5	35.9	29.9	21	11	1/4		12 - 02	
				31.9	25.6		12	3/8	12 - 03		



M-PCX (Straight Joint Plug - Spanner type)

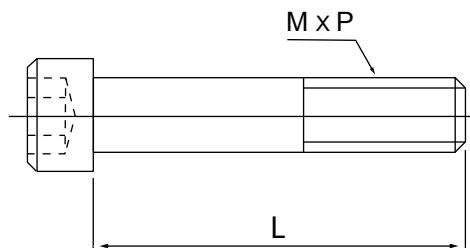
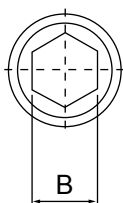


M Body : Brass (C3604) + Nickel plating
 Release ring : Polyacetal resin (POM)
 Thread : Brass (C3604) + nickel plating
 Thread JIS B 0203 tapered thread for tubing R (PT)
 *Thread part is applied with sealant.

- Use in normal pressure 300kPa (3kgf/cm²) or lower
- Keep water temperature under 60°C
- Set the surge pressure (the pressure that acts instantaneously due to an impact flow) so that it does not exceed the maximum working pressure (300 kPa)

Matching tubes Outer x Inner dia.	Tube Inserting hole		Hexagonal wrench size d	L	a	Allen side B	ℓ ₁	R (PT)	Part Number		U/Price 1-9
	Hole dia. P	Depth C							Type	No.	
4 x 2.5	4	15	2.5	21.0	17.0	10	8	1/8	M - PCX	4 - 01H	
6 x 4	6	17	4	22.6	18.6	12				11	1/4
				24.6	18.5	14	8	1/8		6 - 02H	
8 x 6	8	18.5	5	27.9	23.9	14	8	1/8		8 - 01H	
				26.6	20.6		11	1/4		8 - 02H	

สกรูหัวจมเกลียว มม.
SOCKET HEAD CAP SCREWS MM THREAD

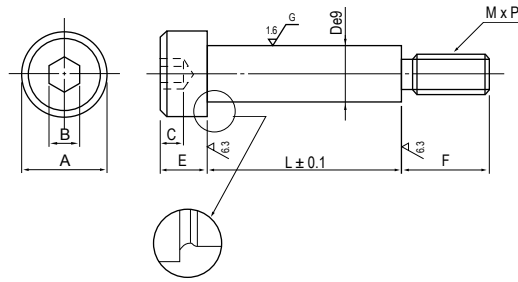


M SCM 435
 H 38-43 HRC
 เกรด 12.9

CODE	L	M3	M4	M5	M6	M8	M10	M12	M14	M16	M20	M22	M24
CB	8												
	10												
	12												
	15												
	18												
	20												
	25												
	30												
	35												
	40												
	45												
	50												
	55												
	60												
	65												
	70												
	75												
	80												
	90												
	100												
	110												
	120												
	125												
	130												
	140												
	150												
	160												
	170												
	180												
	190												
200													
210													
220													
230													
240													
250													
260													
280													
300													

ST สตรีปเปอร์โบลท์

STRIPPER BOLTS

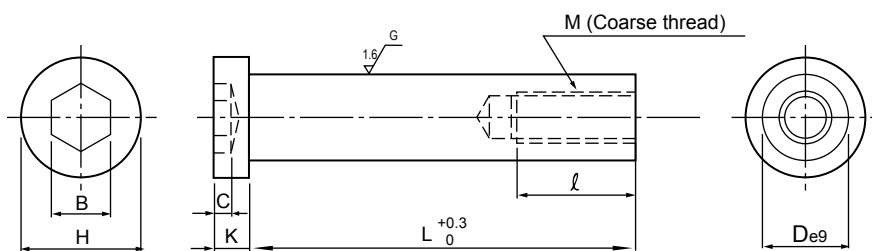


M SCM 440
H 38-40 HRC

De9		A	B	C	E	F	M x P
5.5	-0.020 -0.050	9	3	2.2	4	7	4 x 0.7
6.5	-0.025 -0.061	10	4	2.5	5	9	5 x 0.8
8		13	5	3	6	9	6 x 1.0
10	-0.032 -0.075	16	6	4	8	12	8 x 1.25
12		17					8 x 1.25
13		18	8	5	10	16	10 x 1.5
16	24	10	7	14	18	12 x 1.75	
20	-0.040 -0.092	27	14	9	18	24	16 x 2.0

CODE	D	L											รวม
MSB	5.5	20 25 30 35 40											
		10 15	45 50										
	6.5	20 25 30 35 40	45 50 55 60 65 70										
		10 15	75 80										
	8	20 25 30 35 40 45	50 55 60 65 70 75 80 85 90										
		10 15											
	10	20 25 30 35 40 45 50 55	60 65 70 75										
		10 15	80 85 90 95 100 110 120										
	12	25 30 35 40 45 50 55	60 65 70 75										
15 20		80 85 90 95 100											
13	20 25 30 35 40 45 50 55	60 65 70	75 80 85 90 95 100										
	10 15										110 120 130		
16	20 25 30 35 40 45 50 55	60 65 70 75 80 85						90 95 100					
	15										110 120 130 140 150		
20	40 50		60 70 80 90 95 100										
												110 120 130 140 150	

ST พูลเลอร์โบลท์ PULLER BOLTS



M SCM 440

H 38-40 HRC

CODE	C	K	H	B	M x ℓ	D	L				ราคา
PBA	4	8	16	6	M6 x 17	10	40	50	60	70	
							80	90			
							100	110	120		
							130	140	150		
	5	10	18	8	M8 x 20	13	60	70			
							80	90			
							100	110	120		
							130	140	150		
							160	170	180		
							190	200	210		
	7	14	24	10	M10 x 23	16	100	110	120		
							130	140	150		
							160	170	180		
							190	200	210		
							220	230	240	250	260
	9	18	27	14	M12 x 26	20	120	130	140	150	
							160	170	180		
							190	200	210		
							220	230	240	250	260
							280	300			
10	18	33	17	M16 x 32	25	170	180				
						190	200				
						210	220				
						230	240				
						250	260				
						280	300				

Order : CODE D x L = Pcs.

PBA 13 x 100 = 1

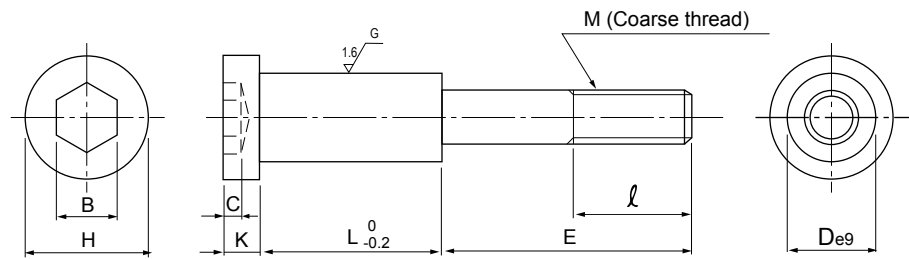
E

Die Springs Screws



ST สติ๊อปเปอร์โบลท์

STOPPER BOLTS



M SCM 440

H 38-40 HRC

CODE	C	K	H	B	M x l	D	L	E	ราคา
STB	4	8	16	6	M6 x 17	10	10	19 24	
							15	19 24 29	
							20	19 24 29 34	
	5	10	18	8	M8 x 20	13	10	22 27	
							15	22 27 32 37	
							20	22 27 32 37 42	
							25	27 32 37 42	
							30	27 32 37 42 47	
							35	37 42 47	
	7	14	24	10	M10 x 23	16	10	30 35	
							15	30 35 40	
							20	30 35 40 45	
							25	30 35 40 45	
							30	35 40 45 50 55	
							35	45 50 55	
	9	18	27	14	M12 x 26	20	15	38 43	
							20	38 43 48	
							25	38 43 48 53	
							30	48 53 58	
							35	48 53 58	
							45	53 58	
	10	18	33	17	M16 x 32	25	15	44 49	
							20	49 54 59	
							25	49 54 59	
							30	49 54 59 64	
							40	54 59 64 69	

Order : CODE D x L x E = Pcs.

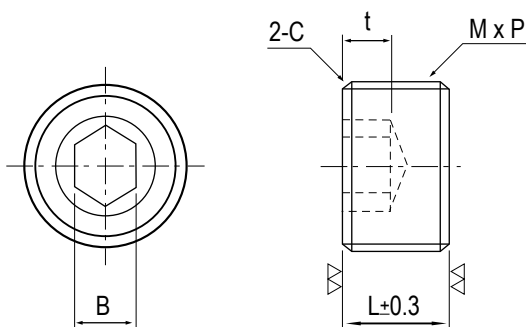
STB 10 x 20 x 24 = 1



S.T. MODERNTOL CO., LTD.

TEL. 0 2417-0840 (อัตโนมัติ 8 สาย) FAX: 662-417-1441, 662-417-1484-5

ST สกรูปลั๊ก SCREW PLUGS



M SCM 435
H 37-43 HRC

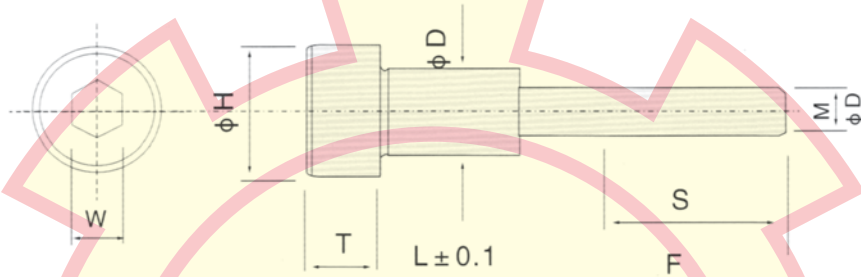
CODE	M	M x P	L	t	B	ราคา	
MSW	3	3	0.5	3	1.2	1.5	
	4	4	0.7	4	1.5	2	
	5	5	0.8	5	2	2.5	
	6	6	1.0	6	2	3	
	8	8	1.25	8	3	4	
	10	10	1.5	10	4	5	
	12	12	1.5	10	5	6	
	14	14	1.5	10	5	6	
	16	16	1.5	10	5	8	
	18	18	1.5	10	5	10	
	20	20	1.5	12	6	10	
	22	22	1.5	12	6	12	
	24	24	1.5	12	6	14	
	25	25	1.5	12	6	14	
	26	26	1.5	12	6	14	
	27	27	1.5	12	6	14	
28	28	1.5	12	6	14		
30	30	1.5	12	6	17		
33	33	1.5	12	6	17		
MSWT	No 1	1/8 R (PT)		7	5		
	No 2	1/4 R (PT)		8.9	6		
	No 3	3/8 R (PT)		10	8		
	No 4	1/2 R (PT)		12	10		
	No 6	3/4 R (PT)		14	14		
	No 8	1 R (PT)		16.5	17		

E

Die Springs Screws



ST สติ๊อปเปอร์โบลท์ STOPPER BOLTS



D		H		T		M	S	W	L	F	ราคา
10		16	0	8	0	M6	18	6	16	22	
									21	27	
									14	30	
13	-0.15	18	-0.36	10	-0.36	M8	24	8	19	35	
									24	40	
16		24	0	14	0	M10	26	10	15	35	
									20	40	
20	-0.20	28	-0.52	14	0	M12	30	14	30	45	
									20	45	
									30	50	
25		33	0	18	-0.43	M16	38	17	35	55	
									31	60	
									41	65	

